

CITY OF HIGHLAND PARK
Proposed 2023 Water Main Replacement

02/06/2023

WETRO CONSULTING ASSOCIATES

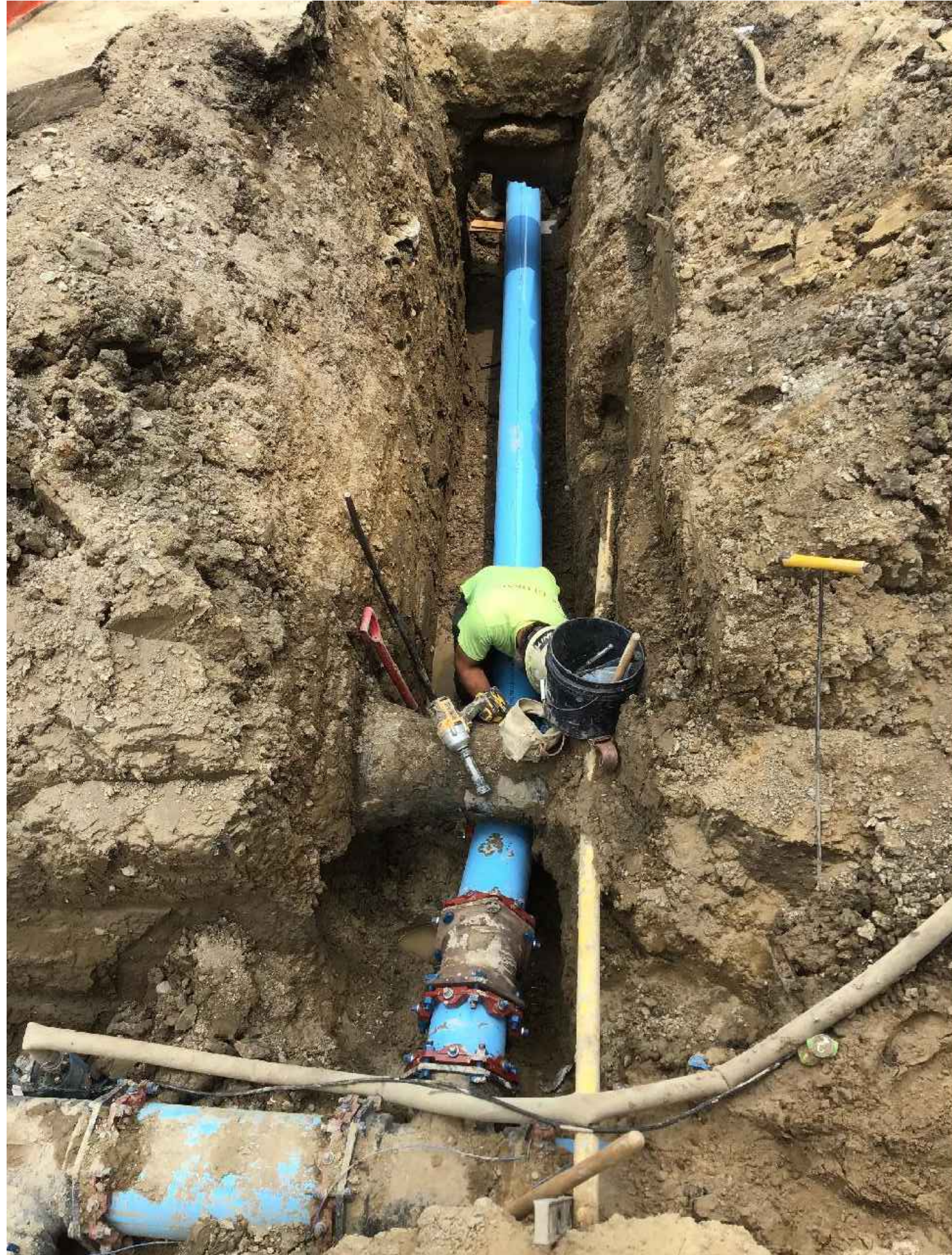
LEGEND
 PHASE 1A
 PHASE 1B
 PHASE 2
 EXISTING WATER MAIN
 CITY BOUNDARY



0 450 900 1,800
Feet



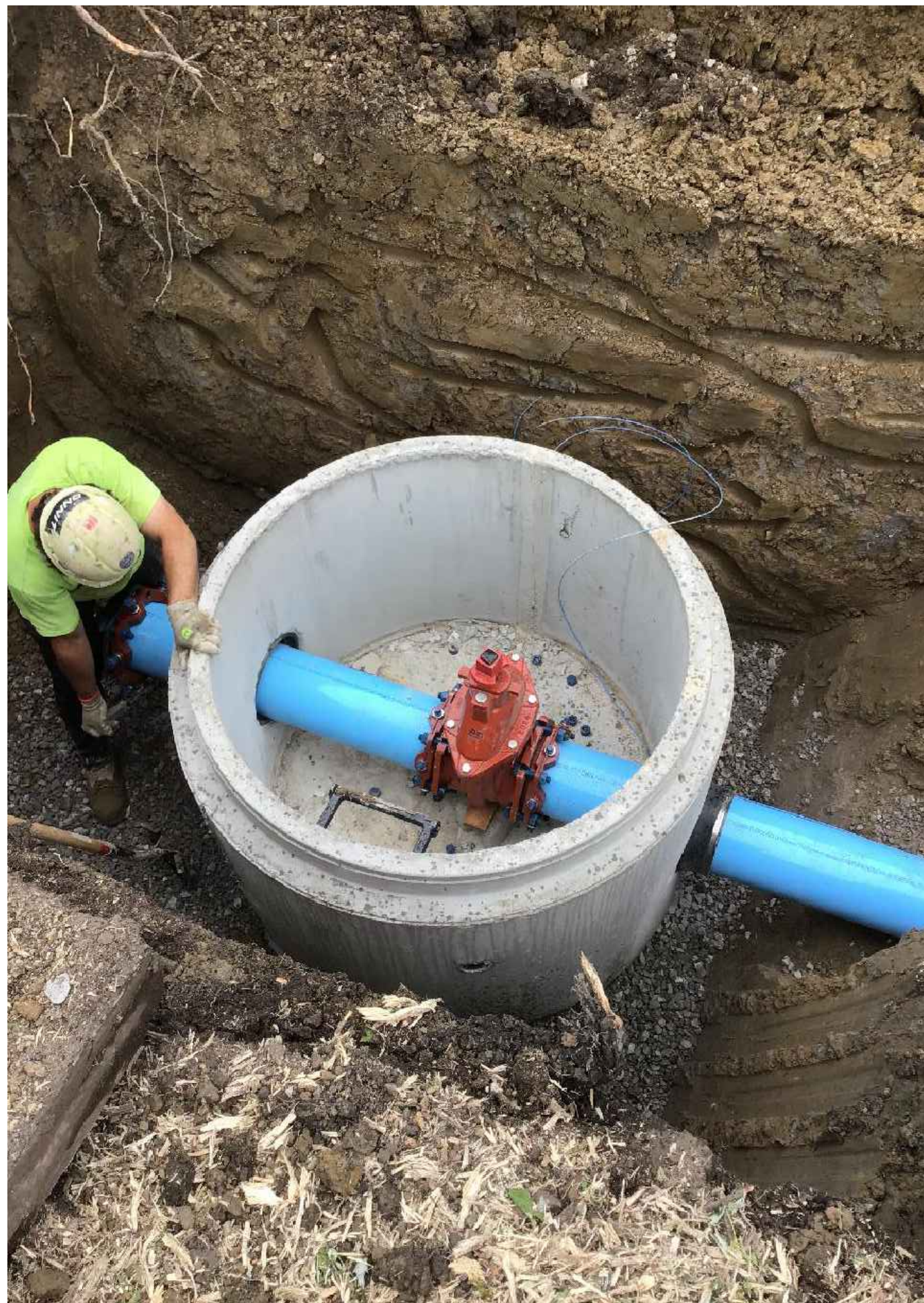
COPPER SERVICE LINE INSTALLATION



JOHN R STREET WATER MAIN CONNECTION TO MCLEAN STREET



12" WATER MAIN INSTALLATION: HORIZONTAL DIRECTIONAL DRILL



12" GATE VALVE INSTALLATION