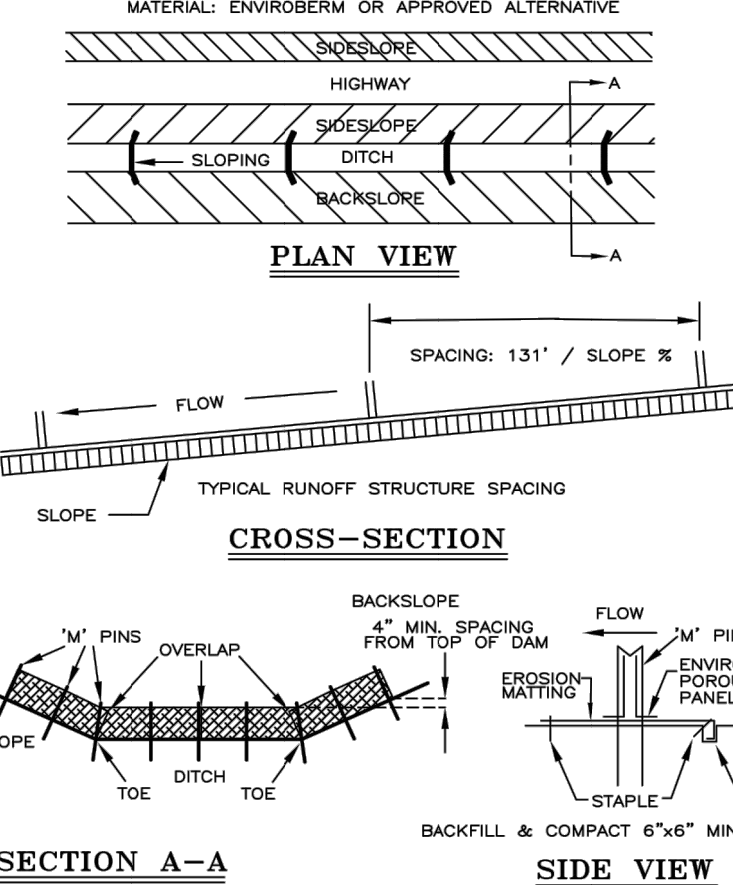
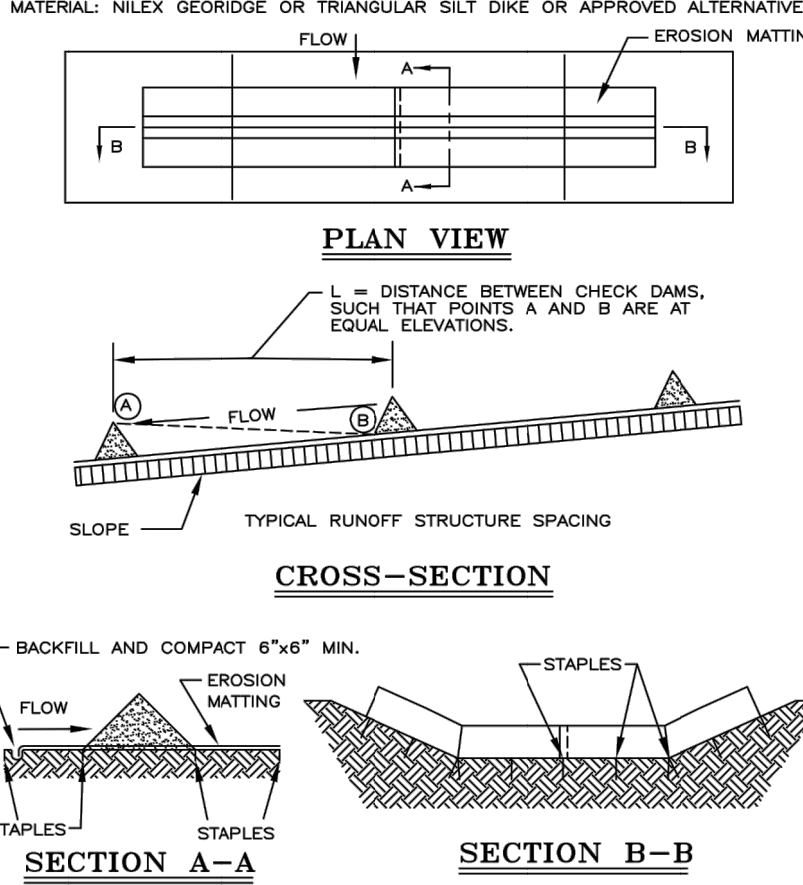


CHECK DAMS ALTERNATIVE "A" (E-3A)
MATERIAL: ENVIROBERM OR APPROVED ALTERNATIVE



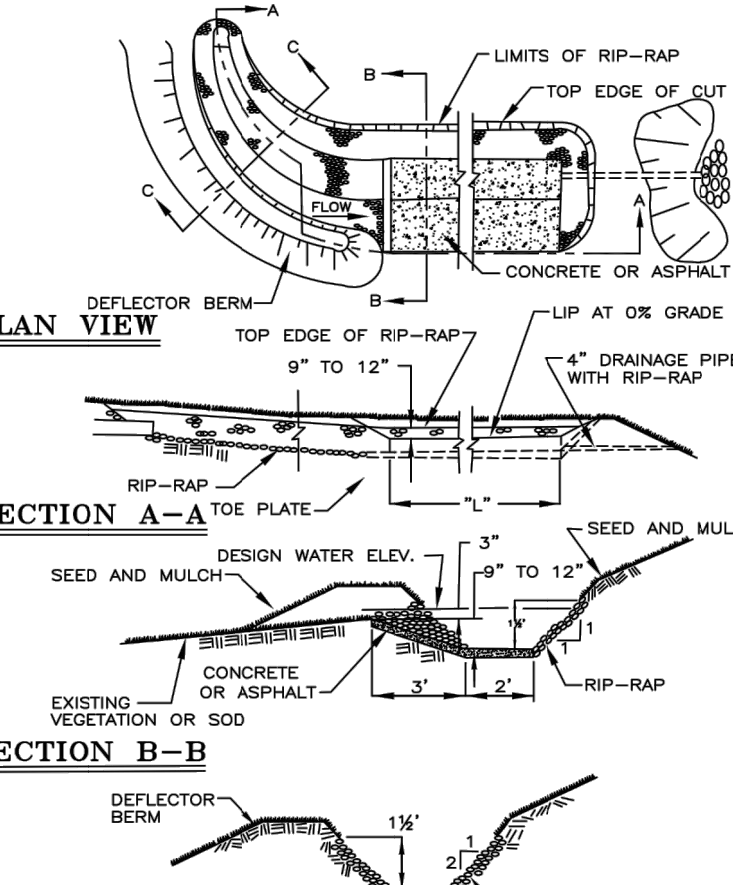
FOR SLOPE AND/OR CHANNEL PROTECTION SEE OTHER BMP'S ON THIS SHEET OR IN THE WRC SOIL EROSION MANUAL.

CHECK DAMS ALTERNATIVE "B" (E-3B)
MATERIAL: NILEX GEOTEXTILE OR TRIANGULAR SILT DIKE OR APPROVED ALTERNATIVE



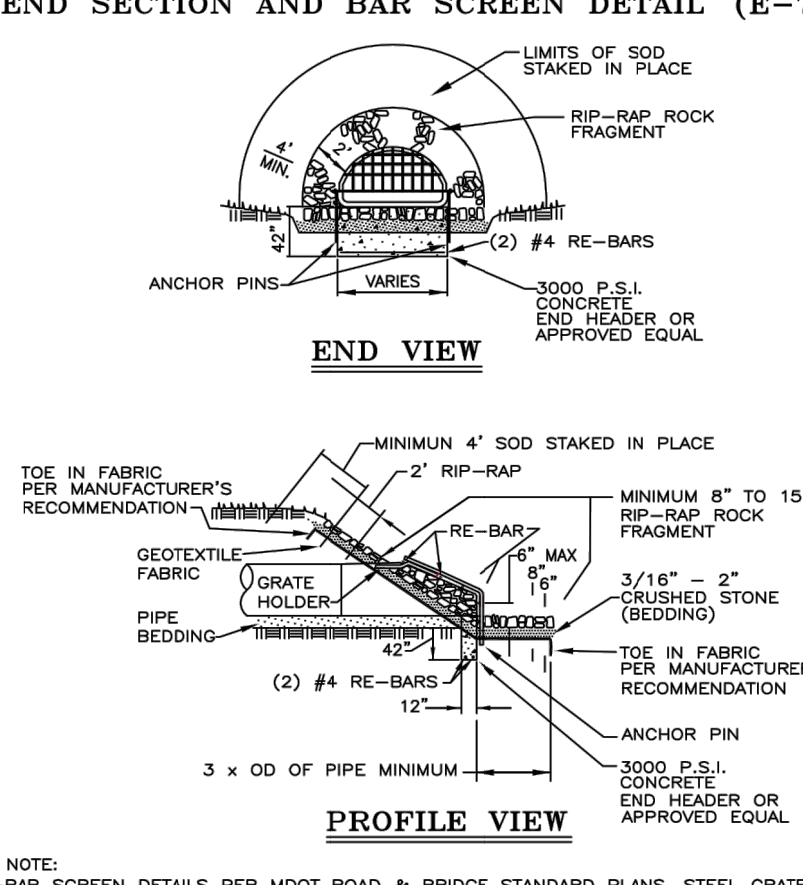
FOR SLOPE AND/OR CHANNEL PROTECTION SEE OTHER BMP'S ON THIS SHEET OR IN THE WRC SOIL EROSION MANUAL.

LEVEL SPREADER (E-4)



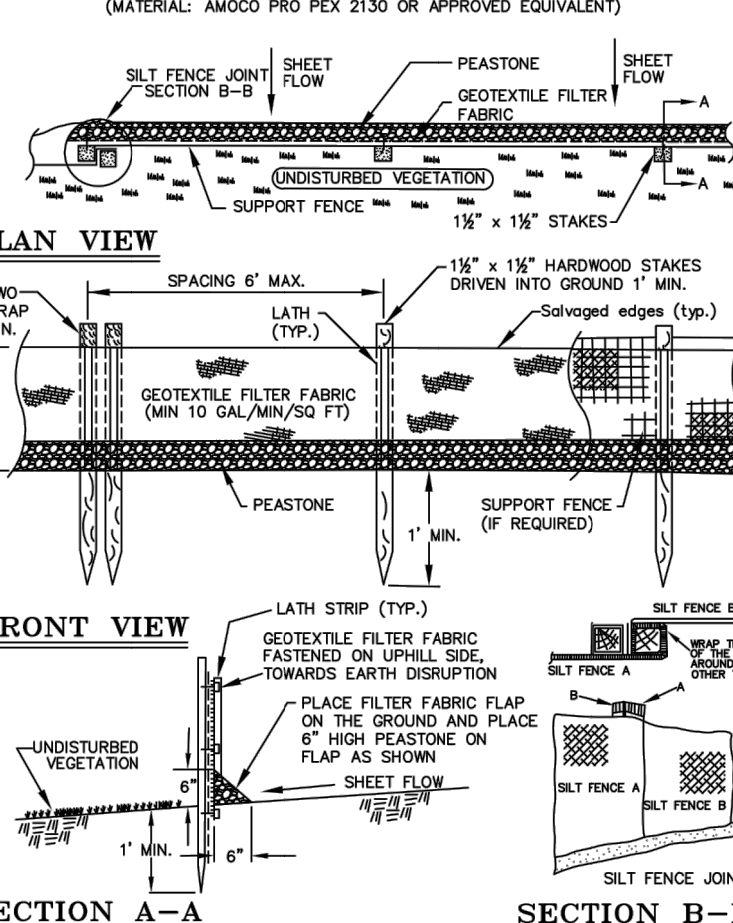
FOR SLOPE AND/OR CHANNEL PROTECTION SEE OTHER BMP'S ON THIS SHEET OR IN THE WRC SOIL EROSION MANUAL.

RIP-RAP, END SECTION AND BAR SCREEN DETAIL (E-7)



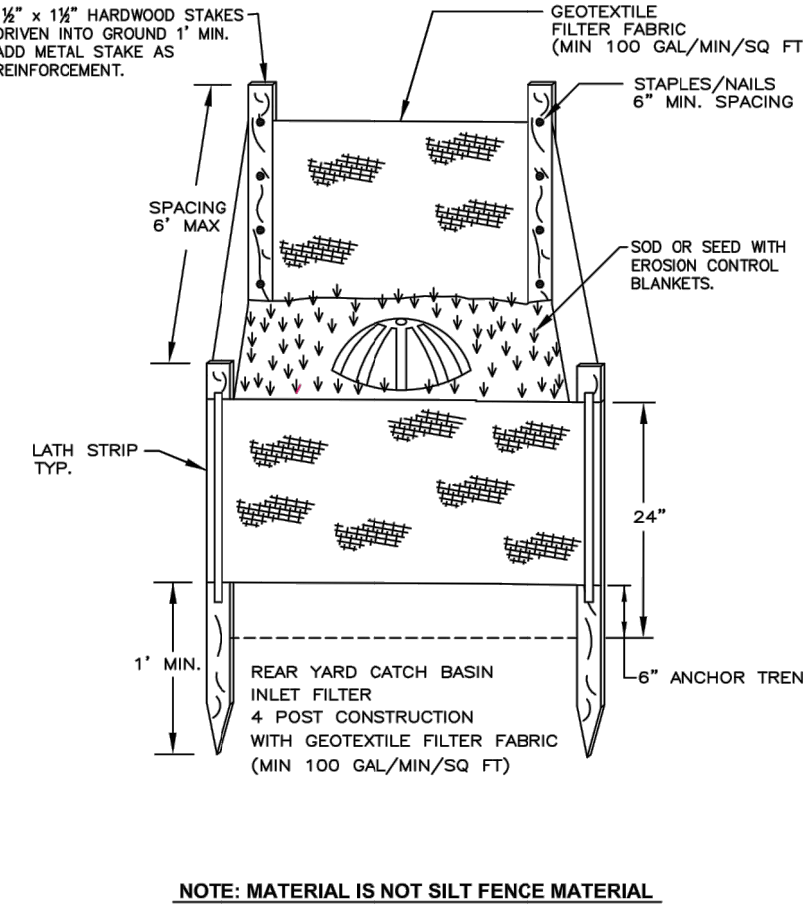
FOR SLOPE AND/OR CHANNEL PROTECTION SEE OTHER BMP'S ON THIS SHEET OR IN THE WRC SOIL EROSION MANUAL.

INTER/FROZEN GROUND SILT FENCE (SP-2W)
MATERIAL: AMOCO PRO FEX 2130 OR APPROVED EQUIVALENT



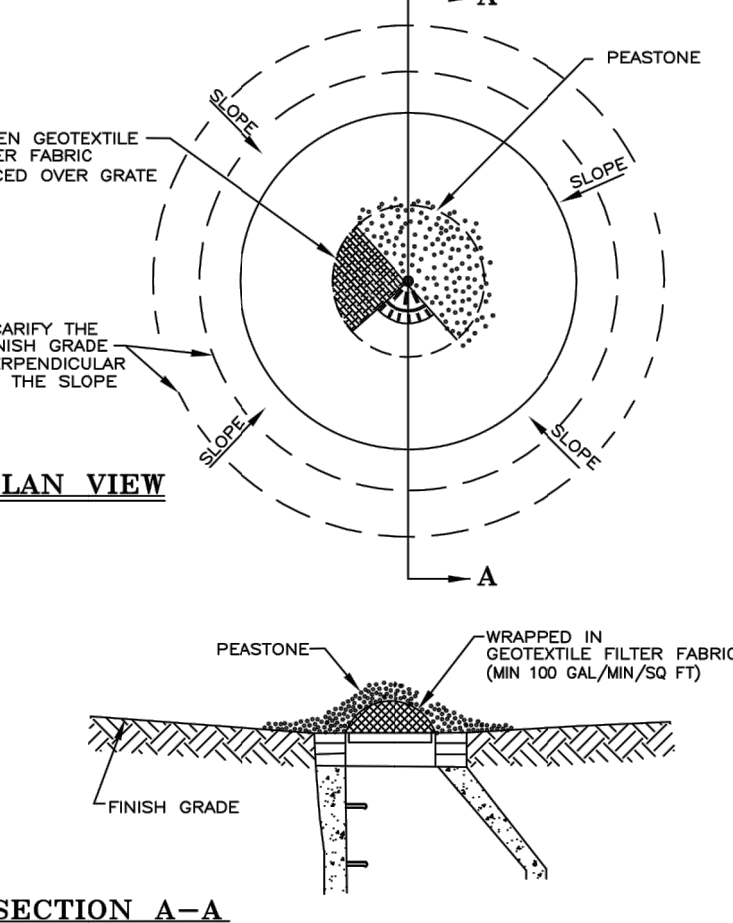
FOR SLOPE AND/OR CHANNEL PROTECTION SEE OTHER BMP'S ON THIS SHEET OR IN THE WRC SOIL EROSION MANUAL.

RYCB INLET FILTER (SI-3)



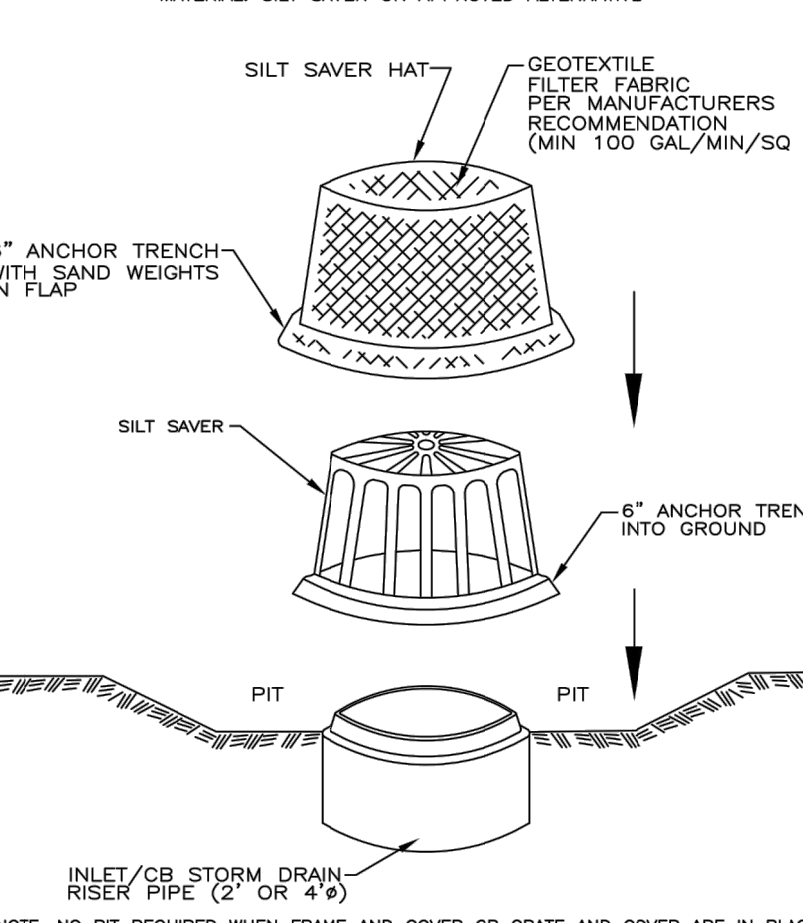
NOTE: MATERIAL IS NOT SILT FENCE MATERIAL.

RYCB INLET FILTER ALTERNATIVE "A" (SI-3A)



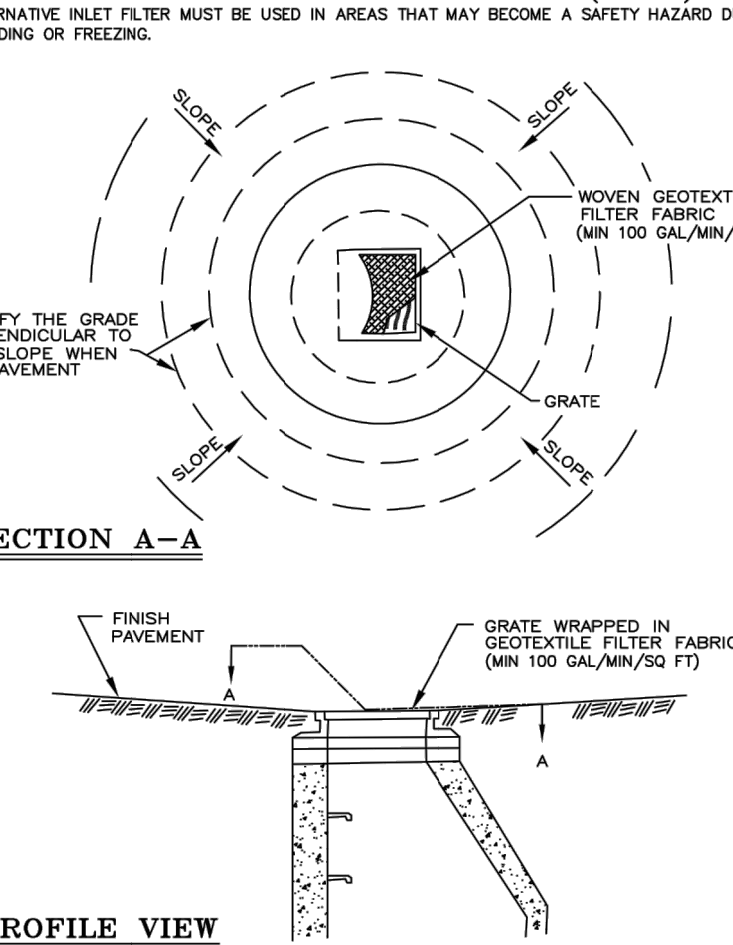
FOR SLOPE AND/OR CHANNEL PROTECTION SEE OTHER BMP'S ON THIS SHEET OR IN THE WRC SOIL EROSION MANUAL.

RYCB INLET FILTER ALTERNATIVE "B" (SI-3B)
MATERIAL: SILT SAVER OR APPROVED ALTERNATIVE



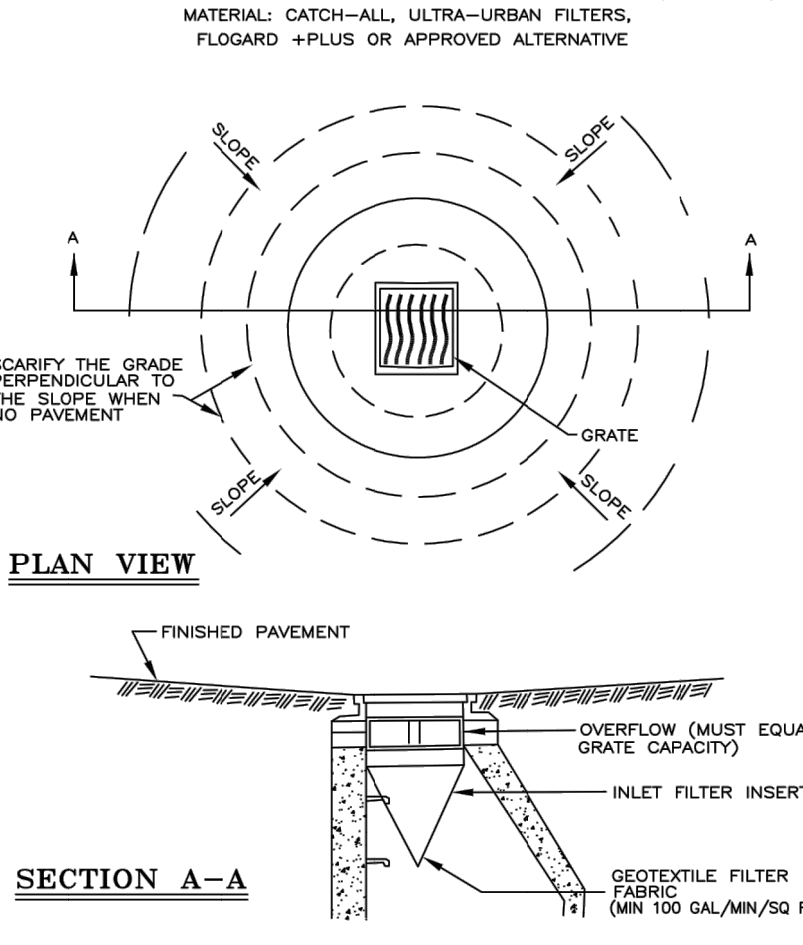
FOR SLOPE AND/OR CHANNEL PROTECTION SEE OTHER BMP'S ON THIS SHEET OR IN THE WRC SOIL EROSION MANUAL.

LOW POINT INLET FILTER (SI-2)
TERNATIVE INLET FILTER MUST BE USED IN AREAS THAT MAY BECOME A SAFETY HAZARD DUE TO COOLING OR FREEZING.



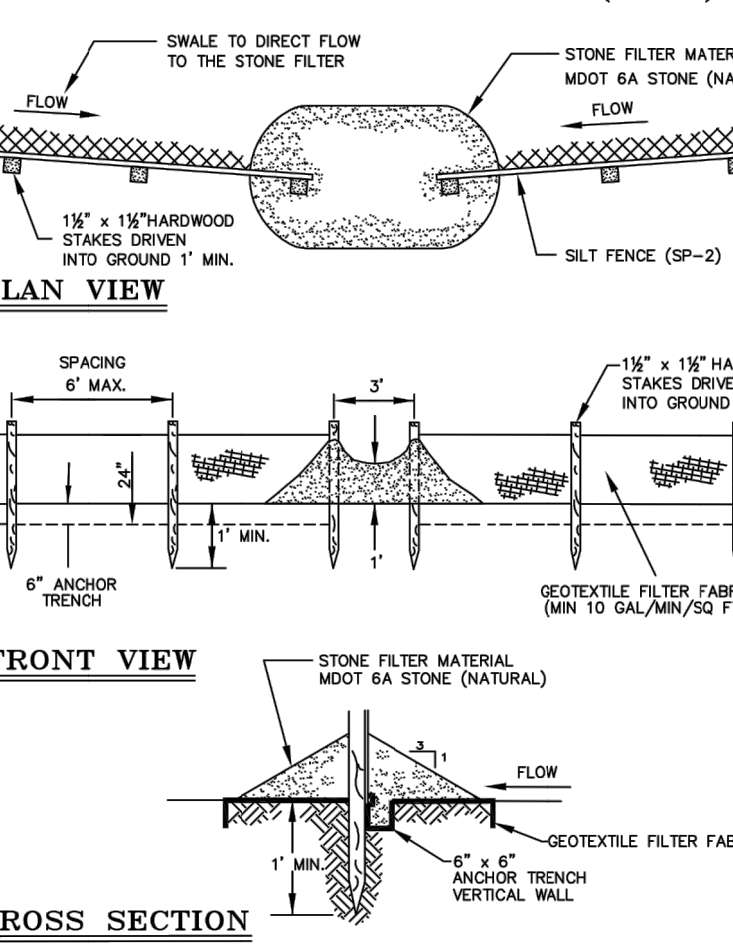
FOR SLOPE AND/OR CHANNEL PROTECTION SEE OTHER BMP'S ON THIS SHEET OR IN THE WRC SOIL EROSION MANUAL.

LOW POINT INLET FILTER ALT. "A" (SI-2A)
MATERIAL: CATCH-ALL, ULTRA-URBAN FILTERS, FLOGARD +PLUS OR APPROVED ALTERNATIVE



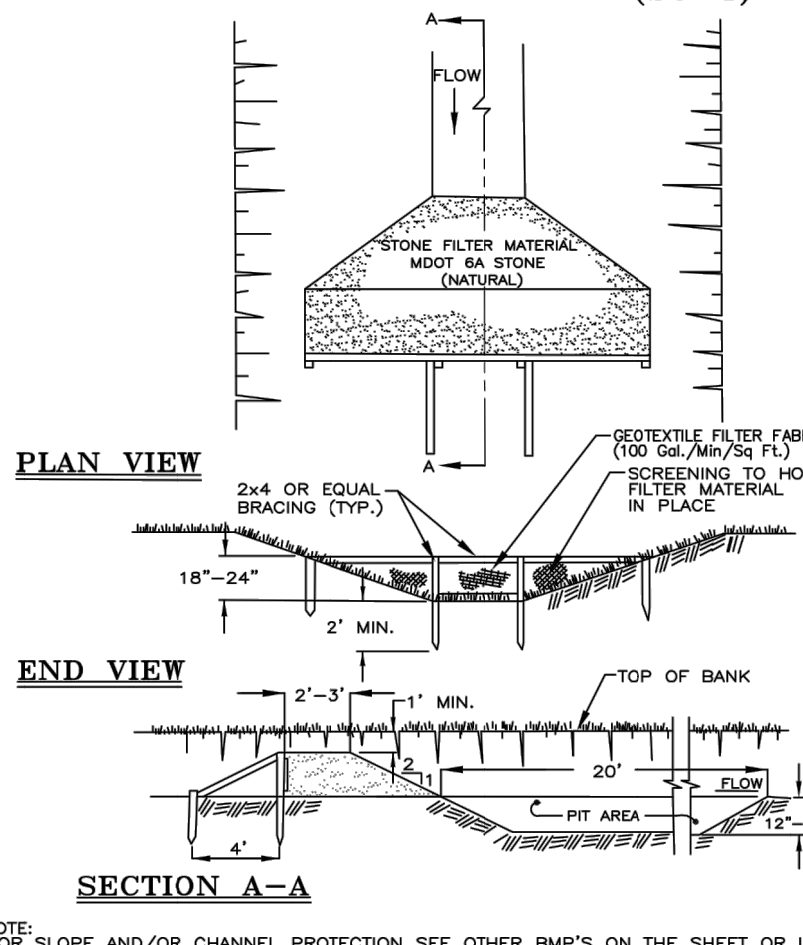
FOR SLOPE AND/OR CHANNEL PROTECTION SEE OTHER BMP'S ON THIS SHEET OR IN THE WRC SOIL EROSION MANUAL.

SILT FENCE GRAVEL FILTER (SP-3)



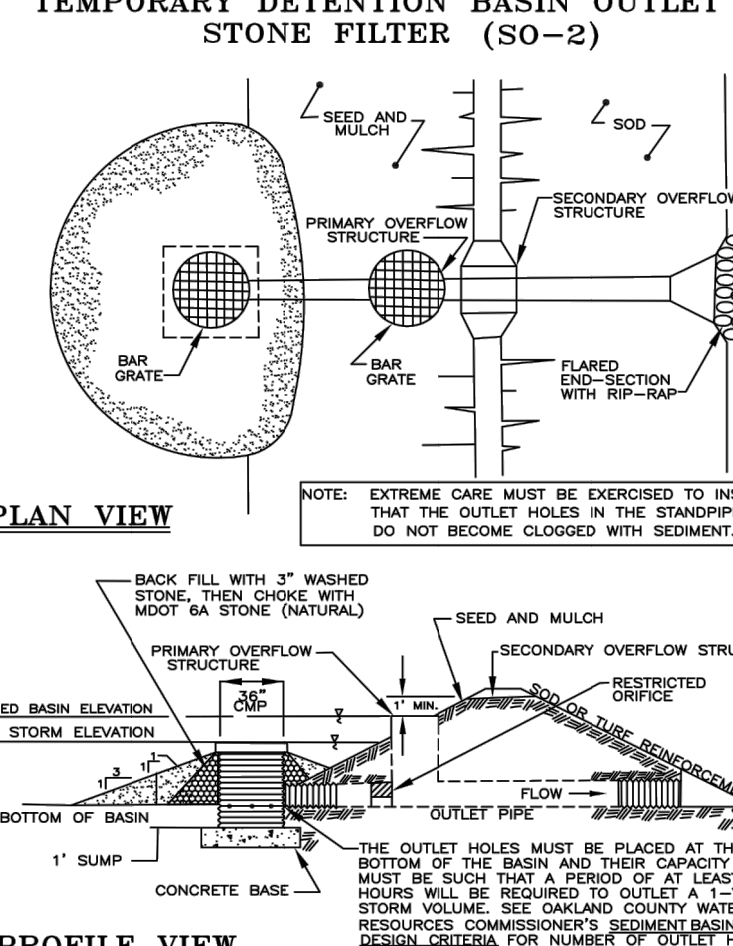
FOR SLOPE AND/OR CHANNEL PROTECTION SEE OTHER BMP'S ON THIS SHEET OR IN THE WRC SOIL EROSION MANUAL.

DITCH SEDIMENT TRAP (SO-4)



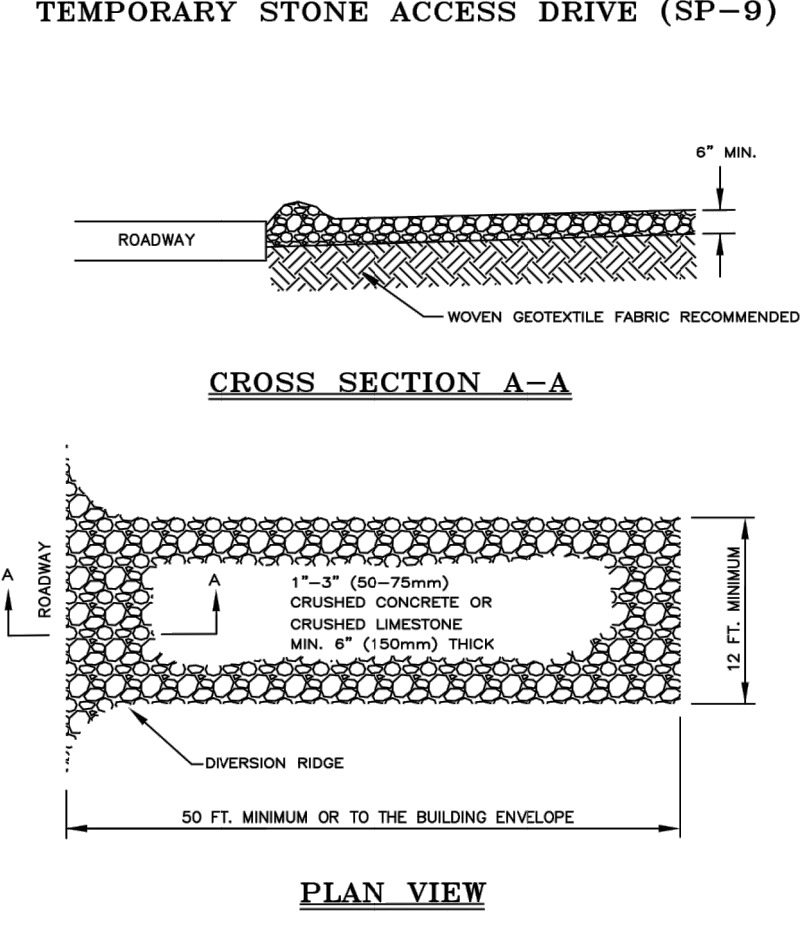
FOR SLOPE AND/OR CHANNEL PROTECTION SEE OTHER BMP'S ON THIS SHEET OR IN THE WRC SOIL EROSION MANUAL.

TEMPORARY DETENTION BASIN OUTLET STONE FILTER (SO-2)



NOTE: EXTREME CARE MUST BE EXERCISED TO INSURE THAT THE OUTLET HOLES IN THE STANPIPE DO NOT BECOME CLOGGED WITH SEDIMENT.

TEMPORARY STONE ACCESS DRIVE (SP-9)



FOR SLOPE AND/OR CHANNEL PROTECTION SEE OTHER BMP'S ON THIS SHEET OR IN THE WRC SOIL EROSION MANUAL.

ISSUED FOR:	
REV:	
DATE:	

CITY OF HIGHLAND PARK
STANDARD SOIL EROSION CONTROL DETAILS AND NOTES
SOIL EROSION CONTROL-1

MCA JOB #: 1039-18-8756
DATE: 06.19.2023
SCALE: AS SHOWN PER DETAIL
DRAWN BY: Metro Consulting Associates
COUNTY: WAYNE
SHEET: SEC1